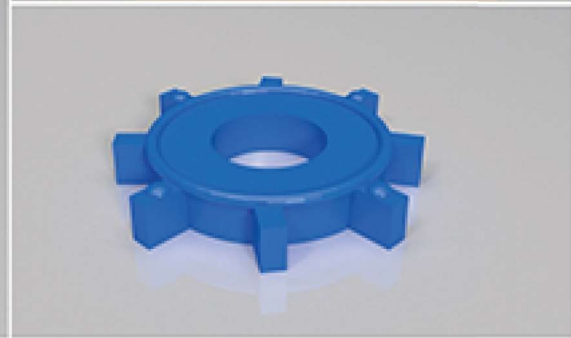
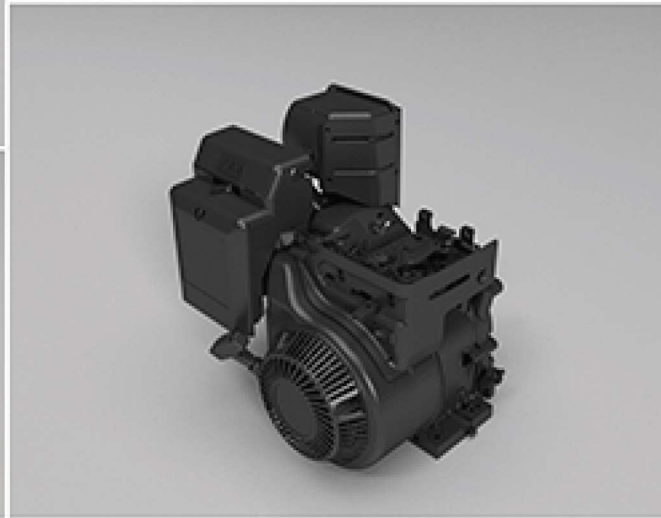
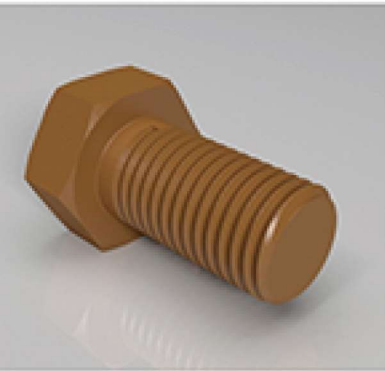
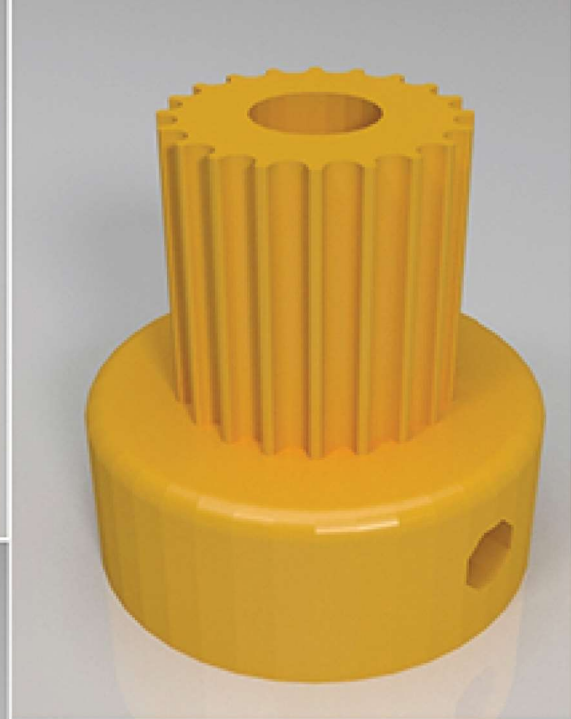


Industrial Model



Machine

- Model No: HORI Z300/Z300D
- Type: Desktop 3D printer
- Layer Thickness: 0.05–0.4mm
- Printing Technology: FDM
- Platform Temperature: 120°C
- Control Panel: 4.3 -inch full-color touch screen
- Machine Size: 497*495*633mm
- Nozzle Quantity: Single/Double
- Build Size: 300*260*305mm (Single)
- Build Size: 245*200*305mm (Double)
- Build Resolution: X,Y-axis 0.01mm,Z-axis0.0025mm
- Print Speed: 10–150mm/s
- Nozzle Diameter: 0.4mm (0.2–0.5mm)

Filament

- Filament Diameter: 1.75mm
- Filament Recommended: PLA
- Filament Colors:

Software

- Software: Cura,SLIC3R,SKINFORGE
- Operation System: Windows/Mac
- File Format: STL,OBJ,DAE,AMF,BMP, JPG, JPEG, PNG, G-Code