

# Disable Windows 8/10 Driver Signature Enforcement

# 2015

---

Users need disable windows 8/10 driver signature enforcement before they install device drivers.

By Ducati Chiang

Ver.1.5

### **IMPORTANT:**

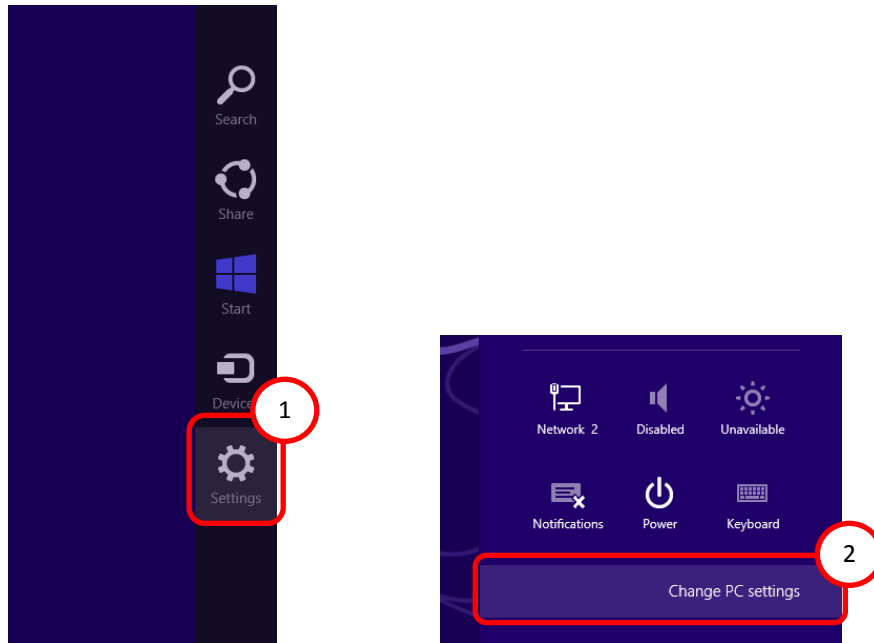
After the next time you restart your windows 8/10, driver signature enforcement feature will enable automatically. Please disable it again if you need install more drivers for others device.

# Disable Windows 8/10 Driver Signature Enforcement

---

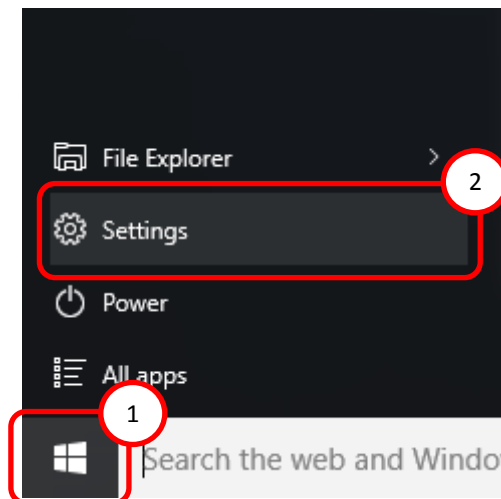
## 1. Windows 8/8.1

- Click **Change PC settings** on the windows side bar. (Move mouse cursor to the lower right corner and click **Settings** on the windows side bar.)



## 2. Windows 10

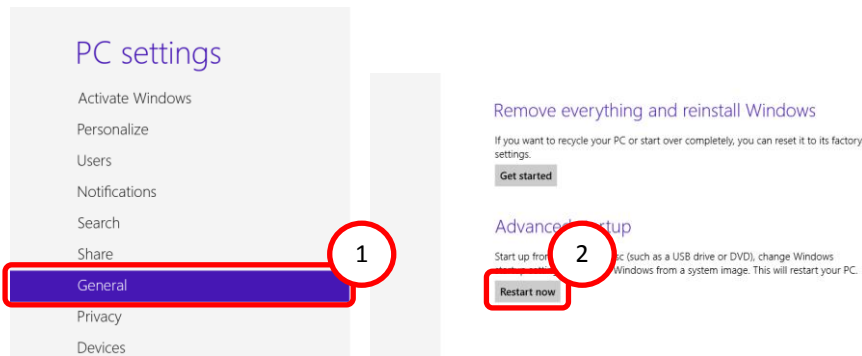
- Click **Settings** in the windows start menu.



# Disable Windows 8/10 Driver Signature Enforcement

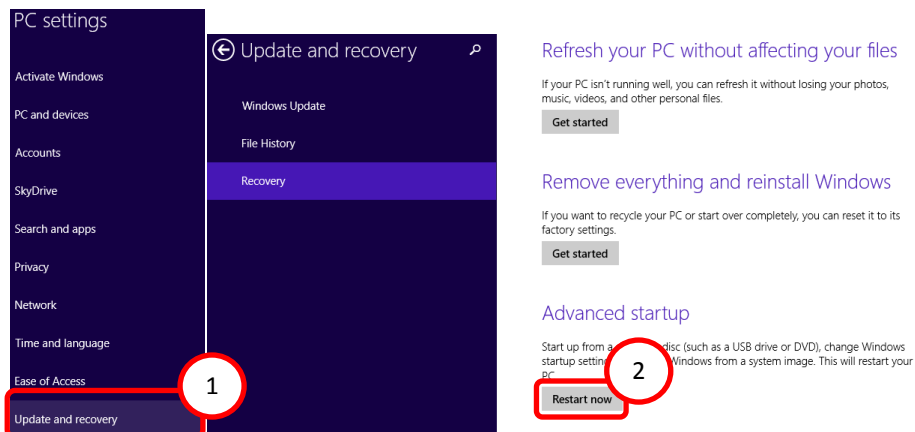
## 3. Windows 8

- Select **General** in the PC settings then click **Restart now** button.



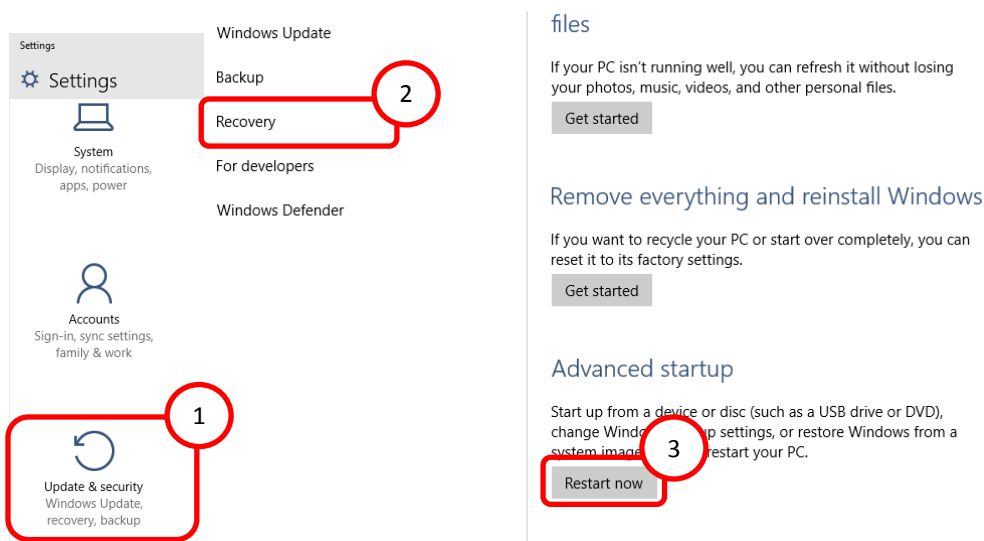
## 4. Windows 8.1

- Select **Recovery** in the **Update and recovery** then click **Restart now** button.



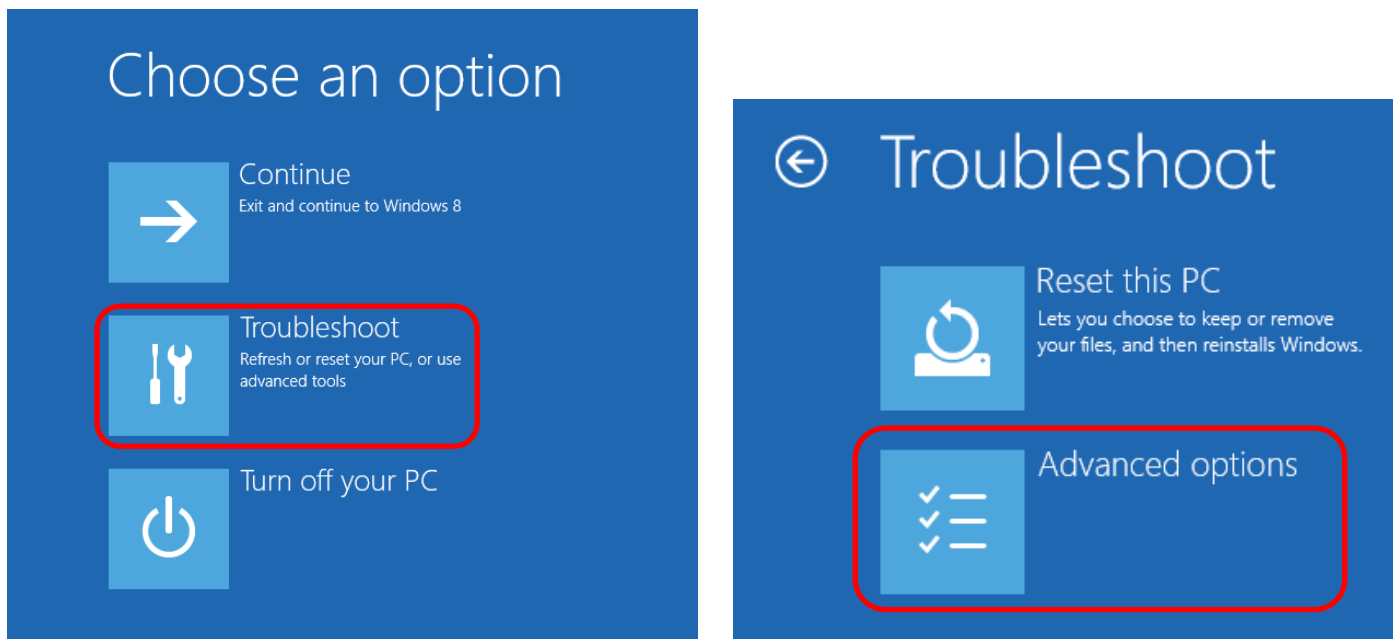
## 5. Windows 10

- Click **Update & security**.
- Select **Recovery** then click **Restart now** in the **Advanced startup**.

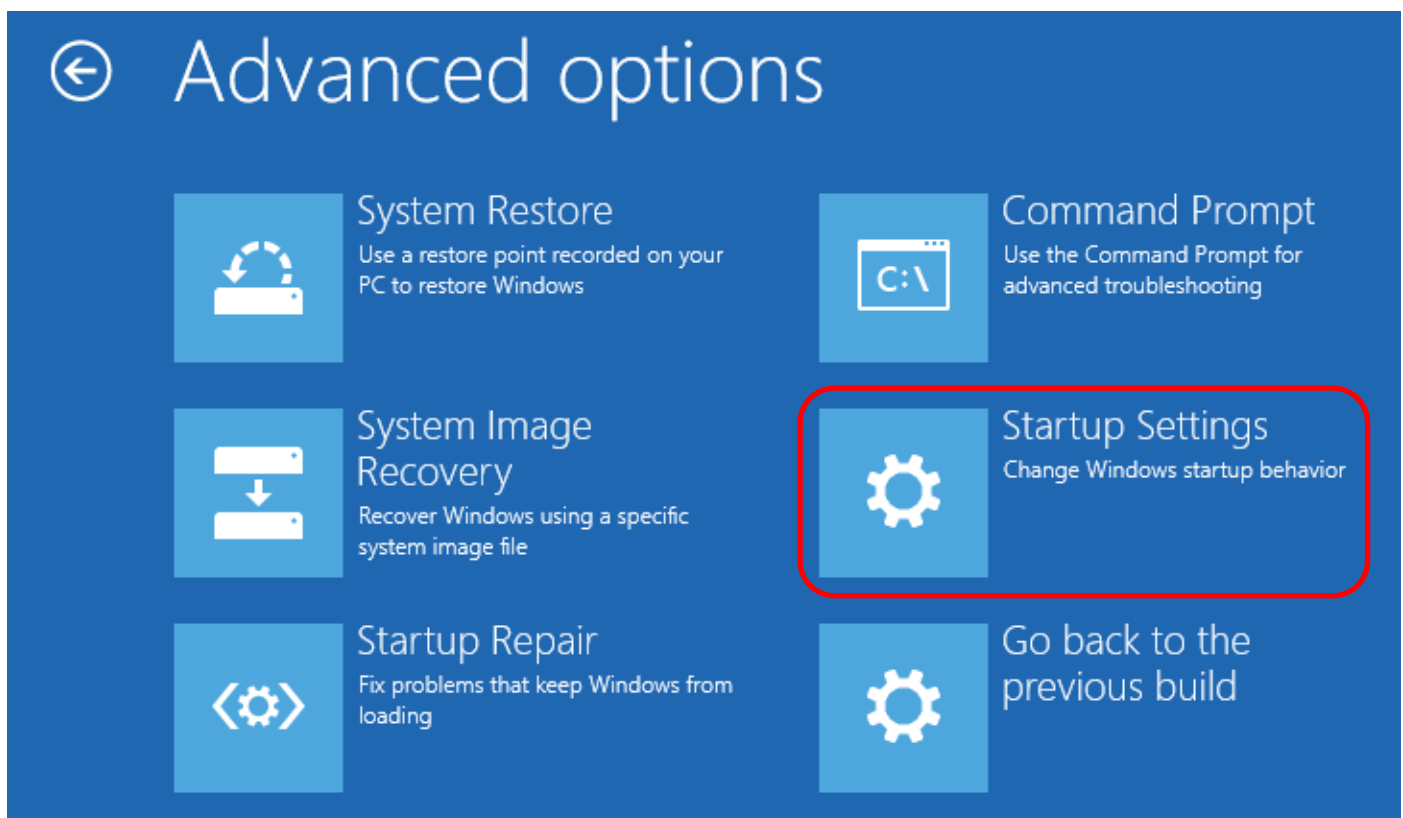


## Disable Windows 8/10 Driver Signature Enforcement

6. Click **Troubleshoot** button then click **Advanced options**.



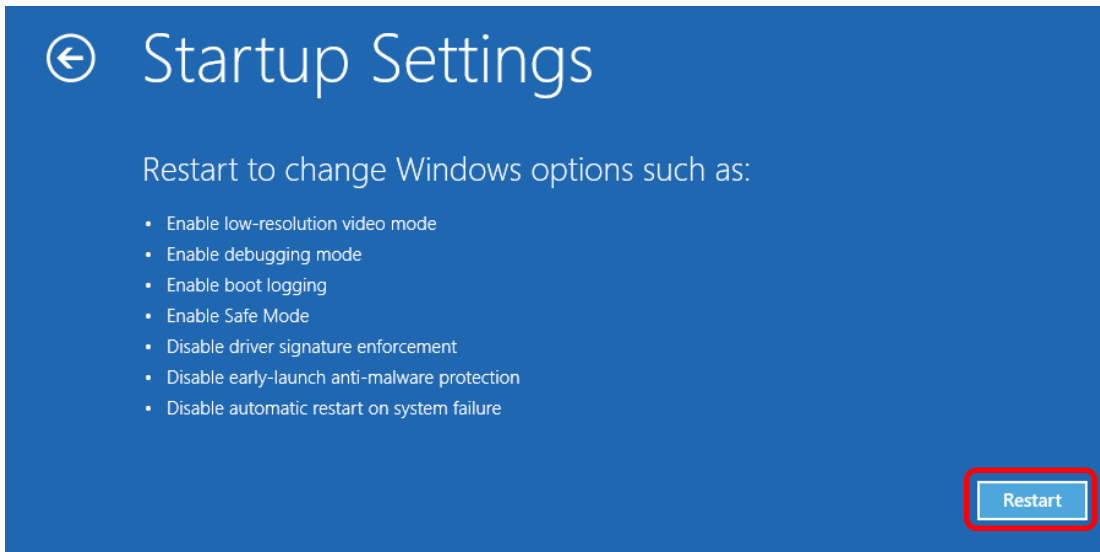
7. Click **Startup Settings** in the **Advanced options**.



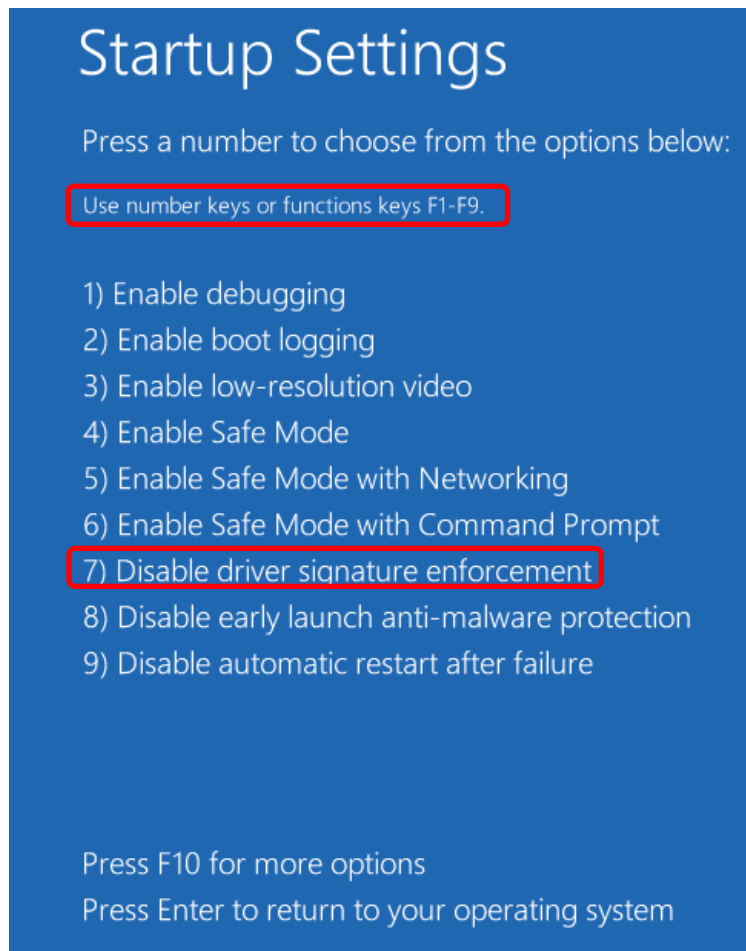
## Disable Windows 8/10 Driver Signature Enforcement

---

8. Click **Restart** button in the **Startup Settings**.



9. Press **F7** button on your keyboard to disable driver signature enforcement.



10. Please install your device driver after OS reboot.